



Spare parts for:

Bar equipment



Suitable for:

MACAP



This catalogue is automatically generated.
Therefore, the sequence of the items might
not be always shown at best.

Updates will be issued in case of additions
and/or amendments.

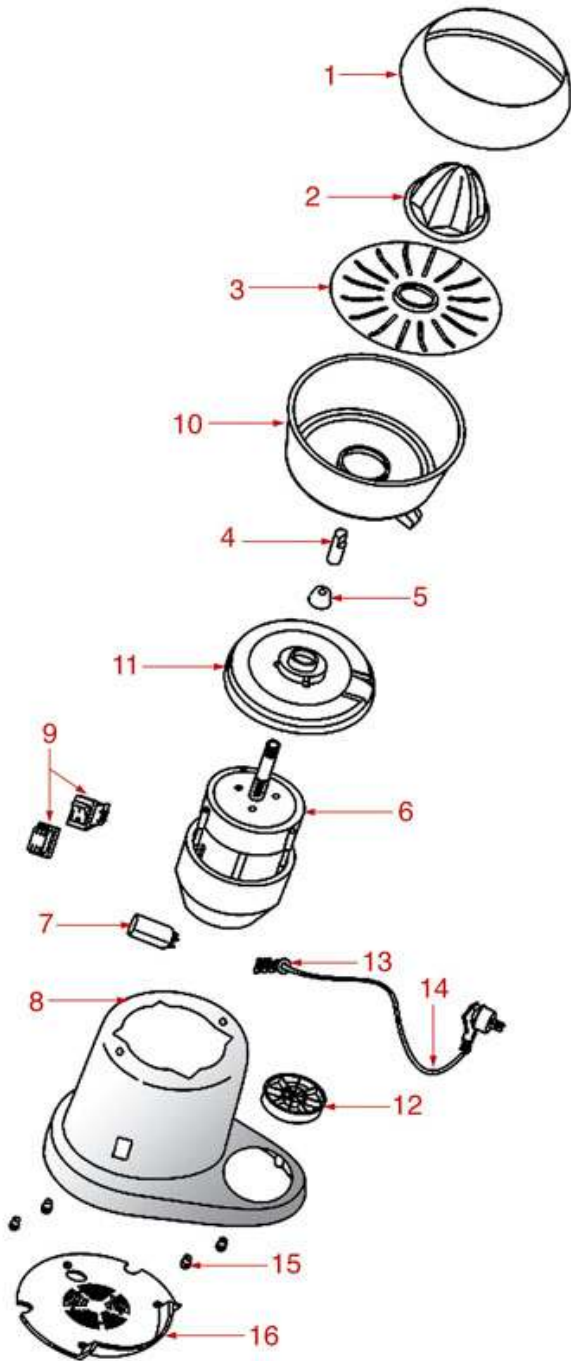
Suitable universal spare parts may not be included



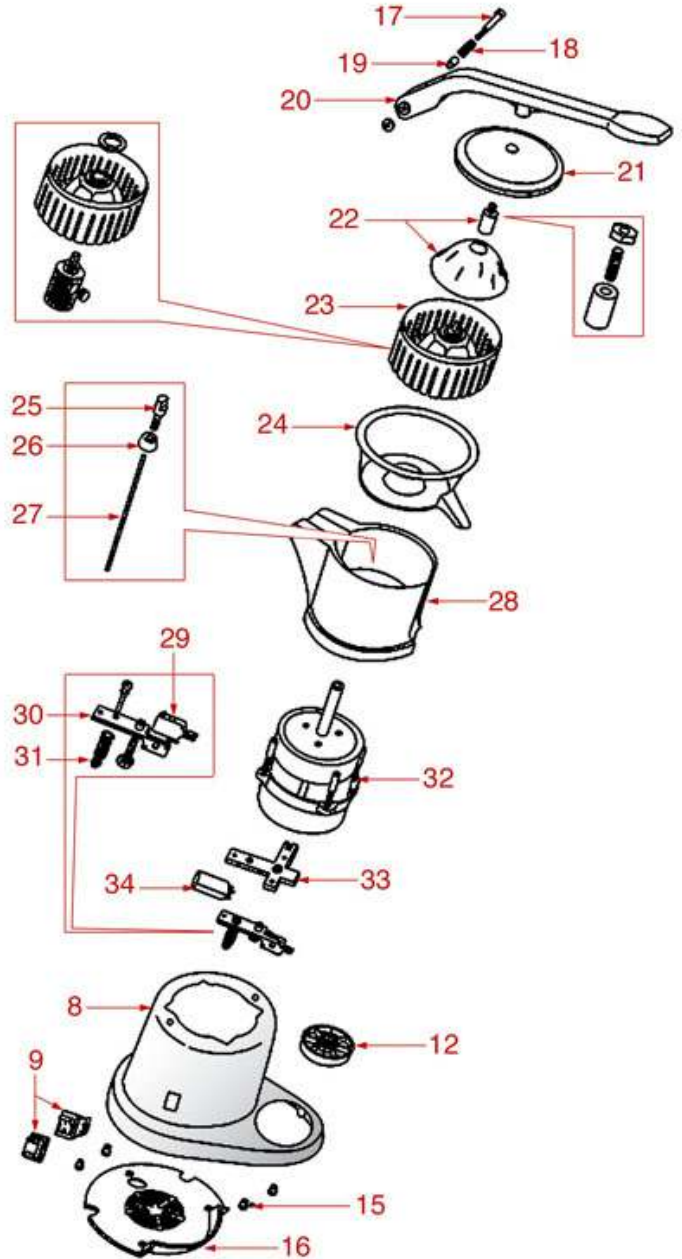


CITRUS-SQUEEZER P200-P202-P206

P200 - P202



P206





MACAP

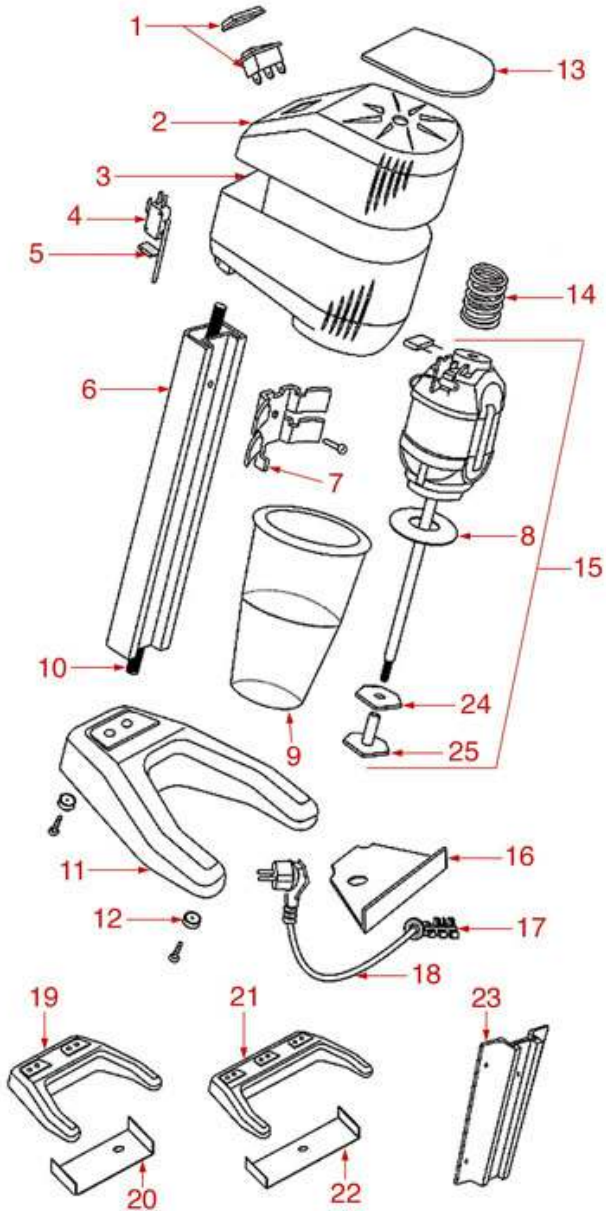


Position	LF code no.	Description
1	1381074	PROTECTION DOME
2	1381075	PLASTIC CONE
3	1381076	PLASTIC FILTER
4	1381077	CONVEYOR PIN
9	1319350	WHITE BIPOLAR SWITCH 16A 250V
12	1381079	PLASTIC PLATE
18	1250079	SPRING FOR LEVER
20	1381072	PRESSURE LEVER
22	1381073	STAINLESS STEEL BELL
23	1381071	STAINLESS STEEL CONE
24	1381171	JUICE CONVEYOR
29	3240123	MICROSWITCH 16A 250V

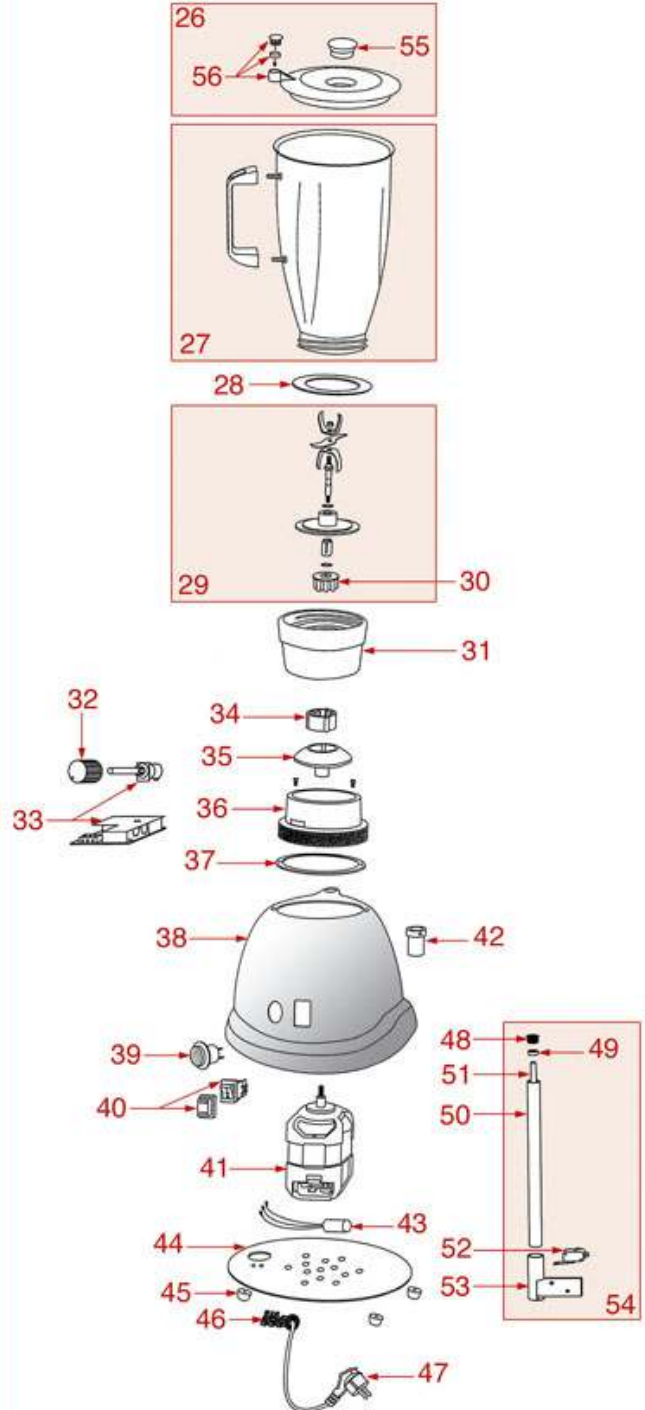


BLENDERS F4-F6-PA10

F4 - F6



PA10





MACAP

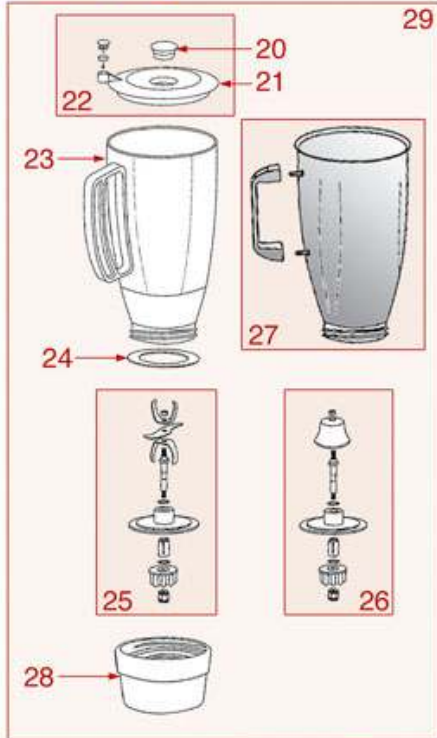


Position	LF code no.	Description
1	1319170	BLACK BIPOLAR SWITCH 12A 250V
4	3240820	MICROSWITCH 16A 250V
7	1381080	JUG HOLDER
9	1080020	STAINLESS STEEL JUG
9	1080023	PLASTIC JUG
24	1381081	STAINLESS STEEL FLAT MIXER
25	1381082	PLASTIC MIXER
26	1381086	COMPLETE LID
28	1186488	JUG GASKET \varnothing 72x55x3 mm
30	1381089	METAL MALE GEAR I 8 TEETH
31	1381088	JUG HOLDER FOR BLENDER
33	1057005	POTENTIOMETER 5A 250V
34	1381083	RUBBER FEMALE GEAR 8 TEETH
35	1381084	GEAR HOLDER
37	1186555	GASKET \varnothing 106x63x2 mm
40	1319157	ON-OFF-ON STABLE SELECTOR SWITCH
43	1068002	TRAP CAPACITOR
55	1381085	INSPECTION CAP FOR LID

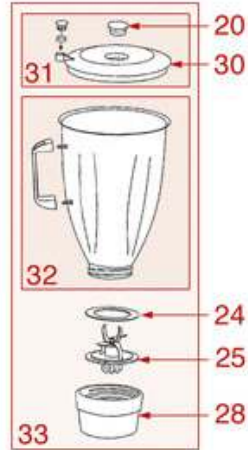


BLENDERS P100-P102-P103-P105

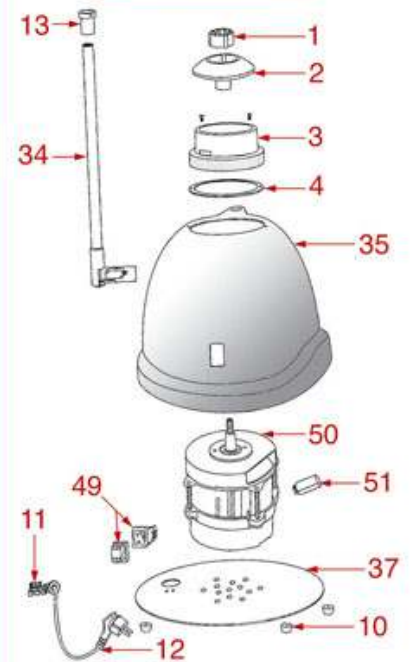
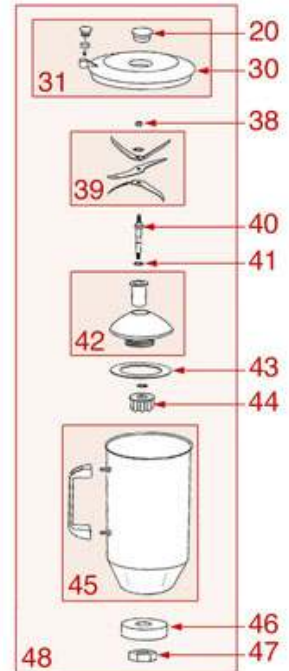
P100 - P102



P103



P105





MACAP



Position	LF code no.	Description
1	1381083	RUBBER FEMALE GEAR 8 TEETH
2	1381084	GEAR HOLDER
4	1186555	GASKET \varnothing 106x63x2 mm
6	1319157	ON-OFF-ON STABLE SELECTOR SWITCH
17	1057005	POTENTIOMETER 5A 250V
20	1381085	INSPECTION CAP FOR LID
22	1381086	COMPLETE LID
23	1080024	PLASTIC JUG 1.4 L
24	1186488	JUG GASKET \varnothing 72x55x3 mm
25	1718007	KNIFE SET
26	1718008	MIXER ASSEMBLY
28	1381088	JUG HOLDER FOR BLENDER
31	1381087	COMPLETE LID
44	1381089	METAL MALE GEAR I 8 TEETH
49	1319350	WHITE BIPOLAR SWITCH 16A 250V



Suitable for:

MACAP



Suitable for:

Capacitors

3068016 CAPACITOR μ F 10 450V 50/60Hz
operating temperature $-25+85^{\circ}\text{C}$
in compliance with EEC 93/68 and 92/31 regulations



MACAP C00061107

3068024 CAPACITOR μ F 16 450V 50/60Hz
operating temperature $-25+85^{\circ}\text{C}$
in compliance with EEC 93/68 and 92/31 regulations



MACAP C00061108

3068027 CAPACITOR μ F 20 450V 50/60Hz
operating temperature $-25+85^{\circ}\text{C}$
in compliance with EEC 93/68 and 92/31 regulations



MACAP C00061128

3068010 CAPACITOR μ F 6.3 450V 50/60Hz
operating temperature $-25+85^{\circ}\text{C}$
in compliance with EEC 93/68 and EEC 92/31 regulat



MACAP C00061126

1068002 TRAP CAPACITOR



MACAP C00061129

Citrus squeezers and accessories

1381086 COMPLETE LID



MACAP C0007F347

1381087 COMPLETE LID



MACAP C0007F351

1381085 INSPECTION CAP FOR LID



MACAP C0007F317A

1381088 JUG HOLDER FOR BLENDER



MACAP C0007F321



MACAP



Suitable for:

Suitable for:

1381082 PLASTIC MIXER

1381079 PLASTIC PLATE



MACAP C0007F216

MACAP C0007S820

1381074 PROTECTION DOME

1381073 STAINLESS STEEL BELL



MACAP C0007S807

MACAP C0004S817

1381081 STAINLESS STEEL FLAT MIXER



MACAP C0004F213

Cones for citrus squeezers

1381075 PLASTIC CONE

1381076 PLASTIC FILTER



MACAP C0007S822

MACAP C0007S809

1381071 STAINLESS STEEL CONE

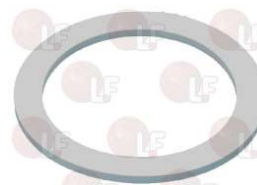
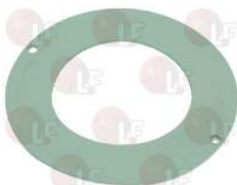


MACAP C0004S803

Gaskets and seals

1186555 GASKET \varnothing 106x63x2 mm

**1186488 JUG GASKET \varnothing 72x55x3 mm
for Blender (SAMMIG) TB-1000**



MACAP C0007F310

MACAP C0007F323



Suitable for:

MACAP



Suitable for:

Gears

1381084 GEAR HOLDER
for Blender (MACAP) P100/D - P100/V - P102/D
P102/V - P103 - P105



MACAP C0007F309

1381089 METAL MALE GEAR 18 TEETH



MACAP C0002F306

1381083 RUBBER FEMALE GEAR 8 TEETH



MACAP C0007F308

Handles

1381072 PRESSURE LEVER



MACAP C0003S802

Jugs for blenders

1381080 JUG HOLDER



MACAP C0007F217

1080023 PLASTIC JUG
height 165 mm
max.external ø 110 mm
graduated



MACAP C0007F218

1080024 PLASTIC JUG 1.4 L



MACAP C0007F304

1080020 STAINLESS STEEL JUG
height 165 mm
max external ø 112 mm



MACAP C0004F215



Suitable for:

MACAP



Suitable for:

Juice conveyors

1381171 JUICE CONVEYOR



MACAP C0007S810

Knives

1718007 KNIFE SET



MACAP C0007F305

1718008 MIXER ASSEMBLY



MACAP C0007F306

Microswitches

3240123 MICROSWITCH 16A 250V
for Granita machine (UGOLINI) GIANTGL - MTGL
MTMINI
for Ice crusher (SANTOS) 9
for Mixer (ROBOT COUPE) MP350 - MP450 - MP550
MP550A - MP600 - MP600A



MACAP C00061016

MACAP C00061019

3240820 MICROSWITCH 16A 250V



MACAP C00061023

Pins

1381077 CONVEYOR PIN



MACAP C0004S8051

Rotary switches

1057005 POTENTIOMETER 5A 250V
handle pin \varnothing 6 mm



MACAP C0006F311



Suitable for:

MACAP



Suitable for:

Springs

1250079 SPRING FOR LEVER



MACAP C0008XX01

Switches

1319170 BLACK BIPOLAR SWITCH 12A 250V

with push-button cap
silk-screen printing 0 - I
temperature max. 120°C
mounting hole 13x20 mm



MACAP C00061020

3319012 GREEN BIPOLAR SWITCH 16A 250V

with indicator light and switch cover
screen printing 0 - I
max temperature 120°C
mounting hole 22x30 mm



MACAP C00061001

1319157 ON-OFF-ON STABLE SELECTOR SWITCH

16A 250V - with cap
max.temperature 120°C
mounting hole 22x30 mm
for Blender (SAMMIC) TB-1000



MACAP C00061022

1319350 WHITE BIPOLAR SWITCH 16A 250V

with push-button cover
0-I silk-screen printing
mounting hole 22x30 mm



MACAP C00061021

Tampers for coffee

1385605 DYNAMOMETRIC COFFEE TAMPER ø 52/57 mm

constant pressure 25 kg



MACAP ACPSZC18

MACAP CPS

1385600 DYNAMOMETRIC MANUAL COFFEE TAMPER ø 57mm

aluminium - constant pressure 14 kg



MACAP ACPM1D57C17

MACAP CPM1

1385601 DYNAMOMETRIC MANUAL TAMPER ø 52 mm

aluminium - constant pressure 14 kg



MACAP ACPM1D52C17

MACAP CPM1